

SPECIFICATIONS

Inputs	Two electronically balanced*
Impedance	>10k ohms
CMRR	>65dB 50Hz - 10kHz
Outputs	DP226 - Six electronically balanced* DP224 - Four electronically balanced*
Source Imp	< 60ohms
Minimum Load	600ohm
Maximum Level	+20dBm into 600 ohm load
Frequency Response	±0.5dB 20Hz - 20kHz
Dynamic Range	>110dB 20Hz -20kHz. unwt'd
Distortion	< 0.02% @ 1kHz, +18dBm
Maximum Delay	650 µS. (increment 2.6 µS Steps)
Output gain	Adjustable +15dB to -40dB in 0.1 dB steps and mute

Parametric Equalisation

Filters	8 Per input 5 per output
Filter gain	+15dB to -30dB in 0.1dB steps
Centre frequency	20Hz - 20kHz, 1/36 octave steps (368 positions)
Filter Q/BW	0.4 to 128/2.5 to 0.008

High and Lowpass Filters

Filters	1 of each per output
Frequency (HPF)	10Hz - 16kHz, 1/36 octave steps
Frequency (LPF)	60Hz - 22kHz, 1/36 octave steps
Response	Bessel / Butterworth 12dB, 18dB and 24dB per octave and Linkwitz-Riley 24dB per octave

Limiters

Threshold	+22dBu to -10dBu
Attack time	0.3 to 90 milliseconds
Release time	4, 8, 16 or 32 times the attack time

Display	2 x 20 character backlit LCD
---------	------------------------------

Connectors

Inputs	3 pin female XLR
Outputs	3 pin male XLR
RS485	In/Out XLRS
RS232	9 Pin (Female) DEE Connector
MIDI	In / 5 pin DIN

Power	3 pin IEC
Power	60VAC - 240VAC
Consumption	< 30 watts
Weight	3.5kg. Net (4.8kg. Shipping)
Size	1.75"(1U) x 19" x 11.8" (44 x 482 x 300mm) excluding connectors
Options	* = Transformers available AES/EBU Digital I/O

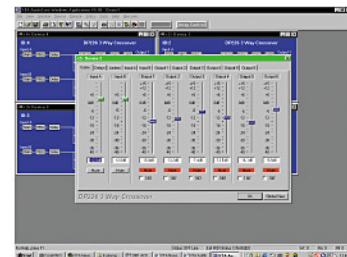
Due to continuing product improvement the above specifications are subject to change.

AUDIOCORE OVERVIEW

In larger installations the AudioCore Windows™ Control Software enables centralised PC control of up to 32 XTA AudioCore series units. The ability to quickly view, set or change configurations and or parameters on multiple units, considerably simplifies set-up. Equalisation curves are accessible for each output, allowing precise equalisation adjustments to be made. Local mute and solo functions ease system troubleshooting. Full memory support is provided allowing the system to be disconnected from the software and run in a simple MIDI or closed contact memory recall mode.

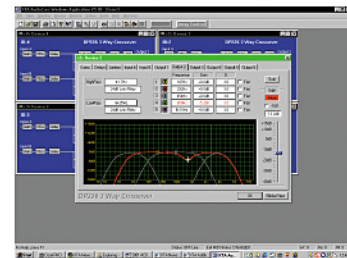
TOTAL CONTROL

The AudioCore control software gives the user instant and intuitive control over all the Parameters of the DP224 and DP226. Click on any unit's function block and the parameters for that function are immediately available and adjustable. All parameters can be adjusted via mouse or keyboard, including of course the versatility now offered by wireless solutions.



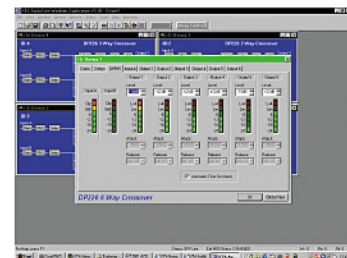
CURVE DRAGGING

The Output Control screen gives the user control over Highpass and Lowpass filters for both frequency and slope enabling speedy setting of the crossover function. All parametric Equalisers are controllable by direct curve dragging or normal mouse/ keyboard control. In curve dragging both frequency and gain locking are available.



LIMITERS

The Limiter screen gives both instant control over all of the limiters' parameters and level feedback from the unit when using a bi-directional interface. The units have built in interfaces for RS232, RS485 and MIDI. The RS232 and MIDI inputs are relayed out of the RS485 bus allowing multiple units to be easily cascaded.



DP226 Speaker Management System
DP224 Speaker Management System



XTA Electronics Ltd, The Design House, Vale Business Park, Worcester Road, Stourport-On-Severn DY13 9BZ, UK
Tel: +44 (0)1299 879977 Fax: +44 (0)1299 879977 www.xta.co.uk info@xta.co.uk

XTA is dedicated to providing increasingly improved technology to produce exceptional audio quality



DP226 Speaker Management System DP224 Speaker Management System

Trusted worldwide as the loudspeaker management system of choice, the DP224 and DP226 continue XTA's reputation for sound quality in two products aimed squarely at the most demanding applications of the sound reinforcement, installation and studio market.

The complete solution for loudspeaker management, with proven sound quality.

The DP226 features 2 inputs and 6 outputs, with the DP224 having 4 outputs. Both inputs have an 8 band parametric equaliser, base delay and gain control. All outputs feature crossover filters, 5 band parametric equaliser, high and low shelving filters, limiter and delay. Full metering is provided for inputs and outputs, with mute and access buttons allowing quick set up and gain adjustment.

Up to 32 DP224s or DP226s can also be controlled via PC with our popular AudioCore Windows™ control software.

FEATURES

Superb audio quality: Carefully optimised Double Precision processing plus 40 bit internal data path for exceptional dynamic range and sonic quality.

High performance look ahead limiters, featuring automatic or manual adjustment of Attack and Release times.

The units are equipped with a switching power supply which adapts itself automatically to mains voltages from 60 to 250 VAC 50/60Hz.

Variable High and Low pass filters for each output can be set for 12, 18 or 24dB/octave slopes and a choice of Bessel, Butterworth or Linkwitz-Riley responses. Independent control over High & Lowpass functions allows asymmetric crossover functions to be realised.

Delay of up to 650 ms can be set for each output with superfine 2.6 us steps (<1mm).

AES/EBU digital input and output are available as an option to allow for 'totally digital' systems.

PARAMETRIC SECTIONS

Due to the double precision high performance processing, each parametric section provides +15dB to -30dB of gain at any frequency 20Hz - 20kHz with a wide range of Q's from 0.4 to 128. All parameters feature fine resolution with 1/36 octave frequency steps, 0.1dB gain increments and 100 Q settings.

CONTROLS

Three velocity-sensitive rotary encoders provide a familiar and easy to use control format with all filter information displayed simultaneously on a backlit LCD display.

PC card slot allows all parameters to be stored and Quick Program update.

METERS

Output meters show output level relative to limit threshold with an LED indicating 4dB into limiting to show heavy compression. The time constants of the meters are linked to limiter time constants.